

Wetlands Park Upgrade

Proposal



Ninja Park



[This Photo](#) by Unknown Author is licensed under [CC BY-NC](#)



Community Consultation – so far

- The Shire received a letter from the Youth Centre requesting council consider installation of equipment for young, low socio-economic kids to utilise for balance and gymnastic type activities they have no access to due to cost & transport – preferably in the Wetlands park as this is close to where most of these families live
- We then received a request for swings – current we have no public swings
- We were then approached by a member of the Wagin Action Group – requesting a larger area of play equipment in the Wetlands park, as the current equipment is limited in age play appropriate items – and quite dated and worn
- Since then we have received a number of letters/emails supporting the WAG's proposal



Council has budgeted for some items

- Wetlands Park Playground Upgrades
- 38,200.00
- Adopted in the current budget

- Wagin Action group has also agreed on contributing – potentially up to 20,000.00



[This Photo](#) by Unknown Author is licensed under [CC BY-SA](#)





Current
Wetlands Park
Area

Proposed
Upgrade Area

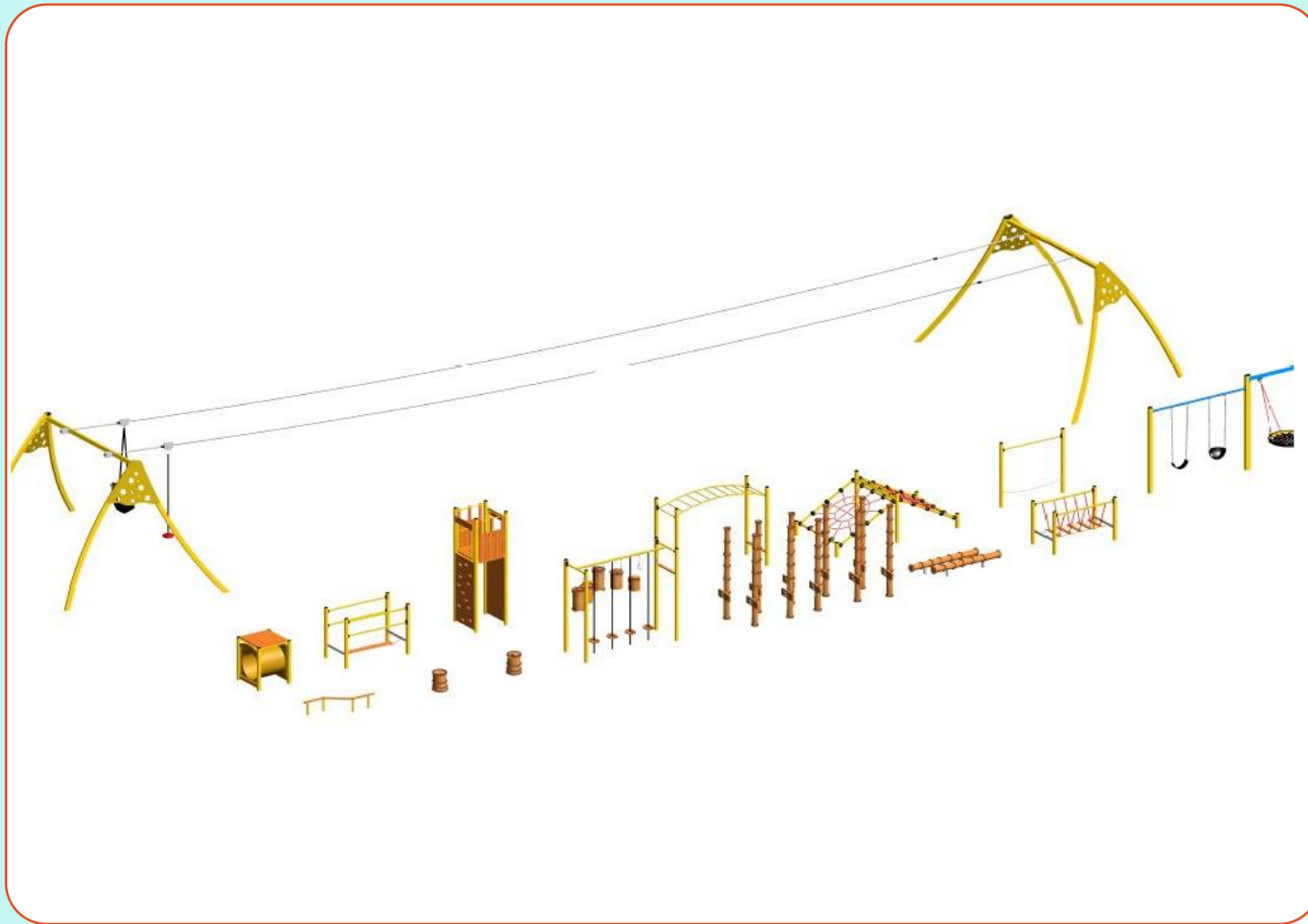
We have measured this out
to ensure there is sufficient
space

Red area = 5044 sq mt

Blue area = 683 sq mt

approx








Forepark design

This design was created by Forepark after discussion with us and Wagin Action group on what all parties were looking for – incorporating the swings, the balance style equipment, along with the challenge for the larger kids wanting to enjoy the park.



Legend:

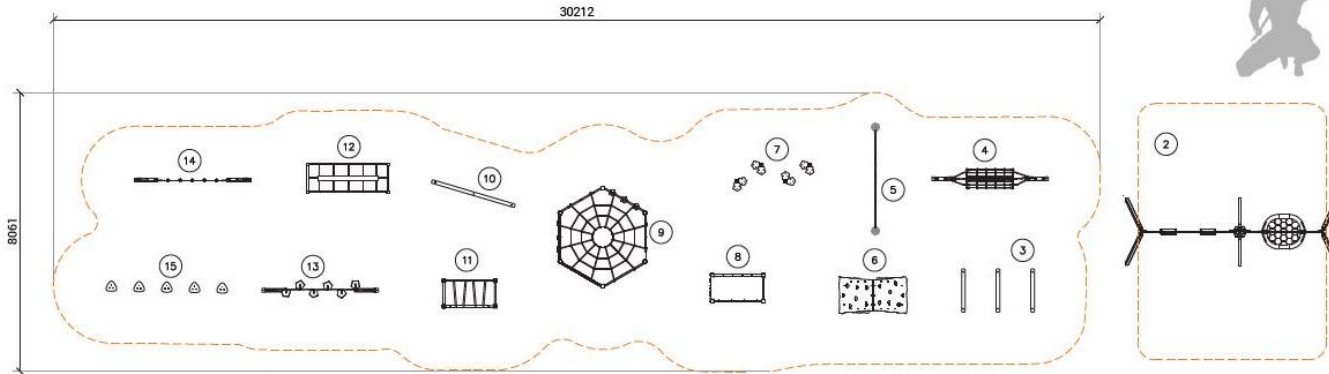
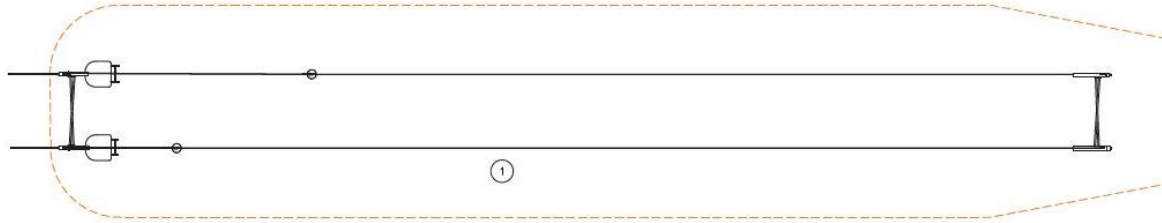
-  Circulation Area
-  Fallzone AS4685:2014
-  Freespace AS4685:2014

Notes:

- This drawing is indicative only. Not for construction. Further site investigation might be required prior to installation.



- | | | |
|----------------------------------|------------------------------|------------------------|
| ① 30m Double Cable ride | ⑥ Rock Climbing Mound | ⑪ Angled Monkey Bars |
| ② Double Swing with Basket swing | ⑦ Timber Steps | ⑫ Nettix Rope Crossing |
| ③ Trio Balance Beam | ⑧ Climbing Unit | ⑬ Nettix Rope Crossing |
| ④ Nettix Net Tunnel | ⑨ Multiple Climbing Stations | ⑭ Nettix Hand Holds |
| ⑤ Spider Web climbing wall | ⑩ Single Balance Beam | ⑮ Steppers |

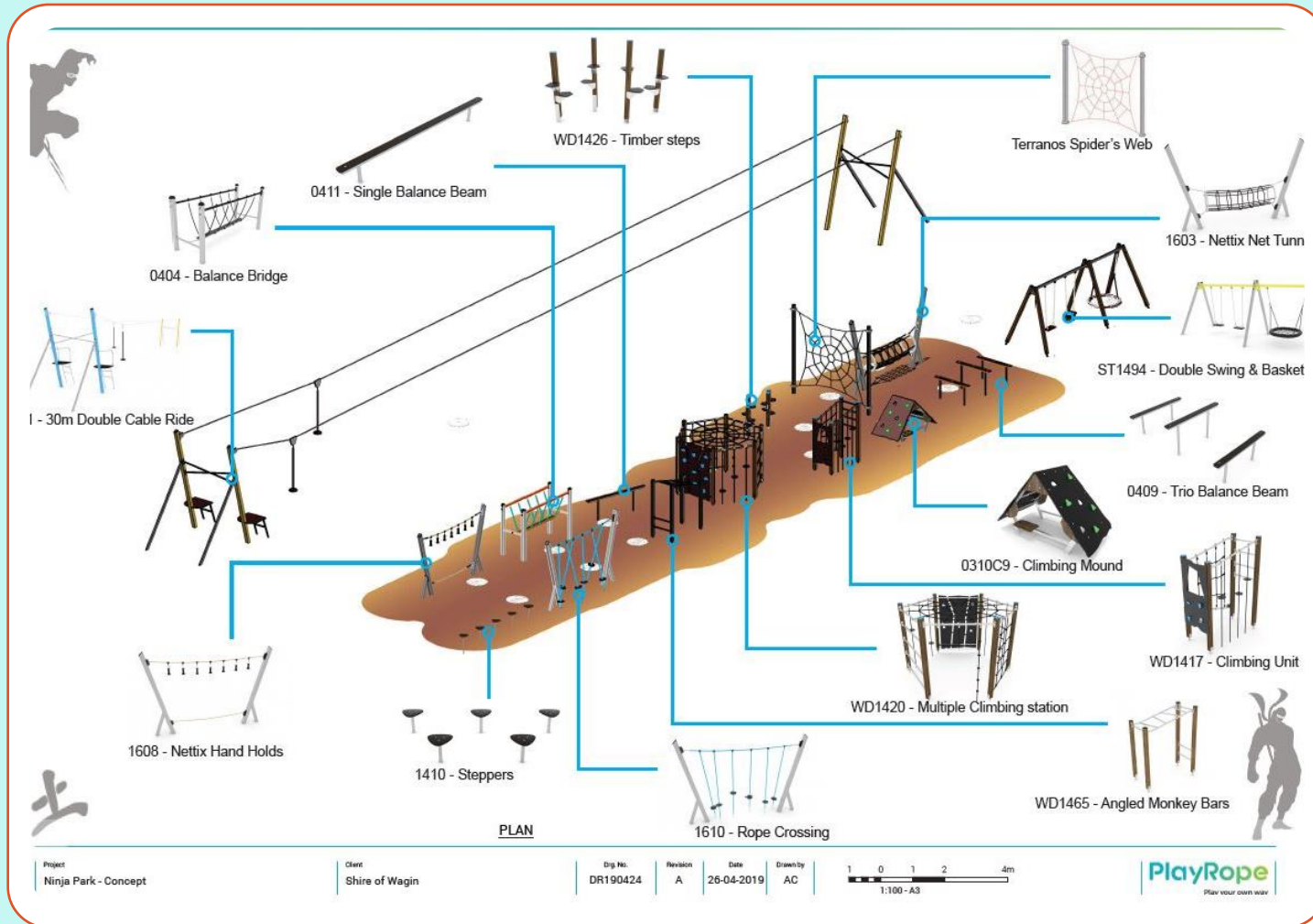


Details of the products photo, technical plan views and 3D renderings may vary from the description provided. All details subject to technical changes.

PlayRope Design

Similar Design – different company





PlayRope details

Quoted cost of

\$125,000.00

Supply and Install





Current play Equipment

Quoted replacement option 1

\$62,040.00

Supply & install

ForePark





Current Play Equipment

Option 2

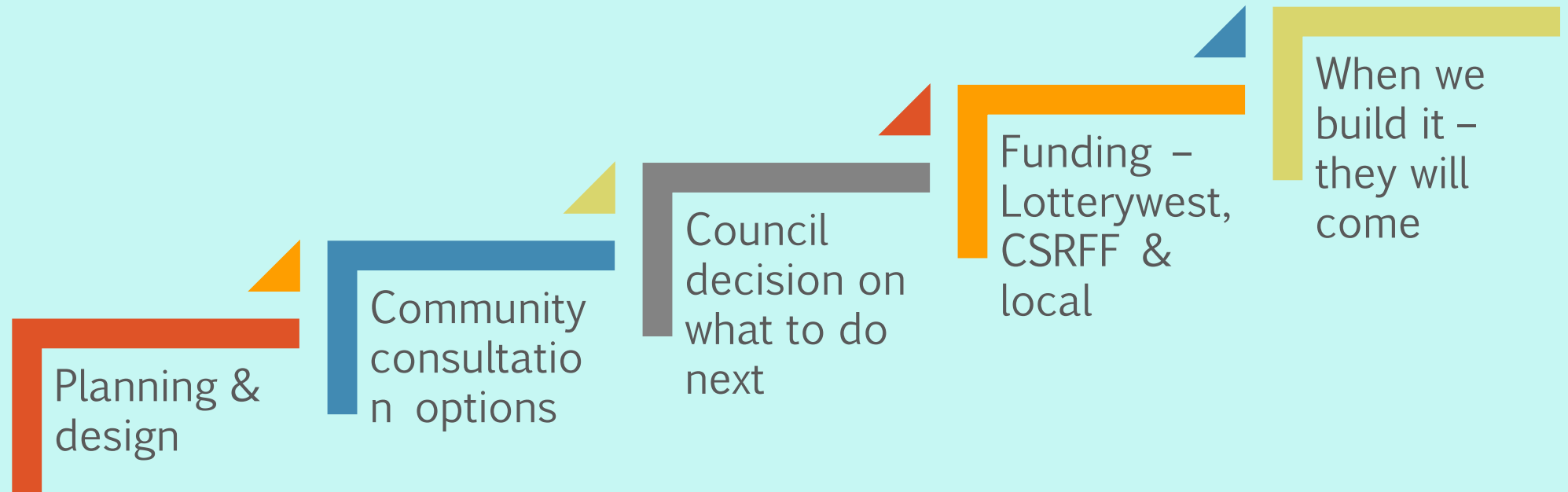
\$41,800.00

Supply and install

ForePark



Things to consider in the upgrade plan



What to include

What not to
include

Softfall

Access

Seating

Shade

Water

Fencing

CCTV

Ablution block upgrade

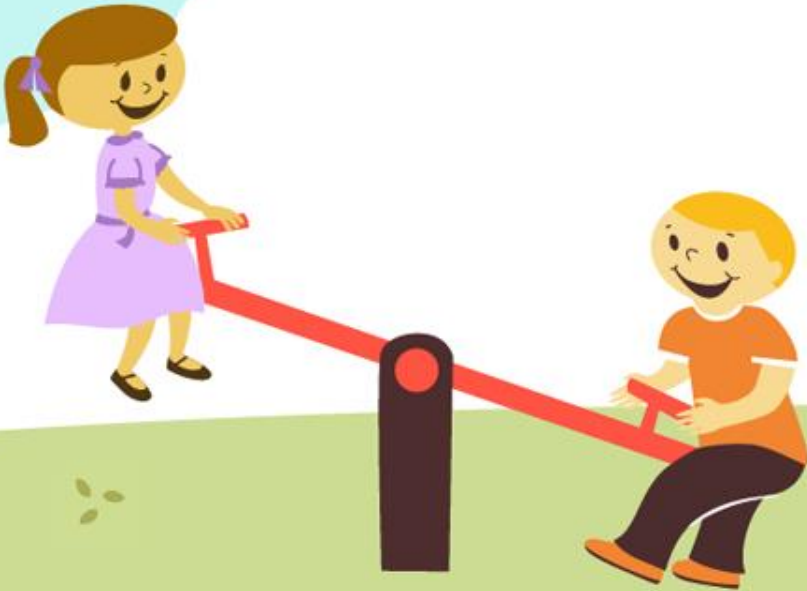
Pathways

Bins

BBQ & shelter

Planting

Dial before you dig issues





Yellow line is
the sewer
mains

We can still put it there – we
just need to be aware of where
we dig holes





This Photo by Unknown Author is licensed under [CC BY-NC-ND](https://creativecommons.org/licenses/by-nc-nd/4.0/)



Discuss

