



FIRE MANAGEMENT REQUIREMENTS 2025 – 2026

Please retain this document for your reference FIRST AND FINAL NOTICE

To all owners and occupiers of land in the Shire of Wagin. This document constitutes the Shire of Wagin Fire Management Requirements (Bush Fire Notice) pursuant to Section 33 of the Bush Fires Act 1954 you are hereby required, on all land owned or occupied by you, as a measure for preventing the spread and extension of a bush fire, to plough, cultivate, scarify, burn, chemically spray or otherwise clear upon the lands Fire Access tracks (fire breaks) in such manner as set out in this notice.



HELP STOP ARSON
Report suspicious
activity to Crime
Stoppers on
1800 333 000

By order of the
CHIEF EXECUTIVE OFFICER

DEFINITIONS

For the purpose of this Notice the following definitions apply:

Flammable Material: Material that can be easily ignited, (i.e. - dead or dry grass and crops, leaves, timber, boxes, cartons, paper, plastic and other material or things deemed by an authorised officer to be capable of combustion) but does not include green growing trees, growing bushes or garden plants.

CBFCO: Will mean the Chief Bush Fire Control Officer as appointed by the Shire of Wagin.

DCBFCO: Will mean the Deputy Chief Bush Fire Control Officer as appointed by the Shire of Wagin.

FCO: Will mean the Bush Fire Control Officer as appointed by the Shire of Wagin.

Total Fire Bans (TFB): Total Fire Bans are the bans imposed by the Minister for Emergency Services or his/her representative on days of severe or catastrophic fire hazards. When a total fire ban is declared, the lighting of any fire in the open air is prohibited, including fires for the purpose of cooking or camping.

Burning of Garden Refuse: Means lighting or use of a fire in the open air for the purpose of destroying garden refuse. One cubic metre or less, is referred to as garden refuse.

Campfire: An outdoor fire for warmth or cooking.

Fire & Rescue District: The area covering the Wagin town site. Fire & Rescue Services are responsible for all fires within this gazetted district. The Shire of Wagin is directly responsible for the issuing of Fire Permits.

Plantation: Any area of planted Pines, Sandalwood, Jojoba and Eucalyptus species other than windbreaks, within gazetted townsite exceeding 3 hectares and elsewhere exceeding 10 hectares.

Harvesting: A person must not operate a grain harvesting machine or any machine used for swathing, baling or slashing of stubble or hay in any crop during the prohibited burning periods unless;

1. One hand held water filled fire extinguisher (minimum capacity 7.5 litres) is filled in a readily accessible position on the machine.
2. A readily mobile fire fighting unit of a minimum of 600 litre capacity powered by an engine driven pump is in attendance during harvest operations.

The following definitions must apply to the guidelines on the ban of vehicle and machinery movement and the operation of internal combustion engines under Regulations 38A and 38B of the Bush Fires Act.

Laneway/Roadway (non gazetted)

A laneway/roadway is defined as having a trafficable surface, free of all inflammable material, a minimum of four metres wide. Overhanging vegetation has to be pruned back so as not to come into contact with parts of a vehicle.

Yard

A yard is defined as an area, more than four metres wide, with a constructed, trafficable surface, free of all flammable material except live standing trees.

Mobile Fire Fighting Unit

A mobile fire fighting unit is defined as having a minimum water carrying capacity of six hundred (600) litres, fitted with a hose and pump capable of delivering water through an adjustable nozzle in the spray and jet configurations.

Harvest Ban

A ban in the operation of all grain harvesting machines including swathing, baling or slashing machines within the Shire or a part of the Shire and during a time, as specified in a notice or broadcast (Reg 38A).

A ban on the Movement of all vehicles and Machines and the Operation of Internal Combustion Engines

A ban on the movement of all vehicles and machinery and the operation of internal combustion engines within the Shire or a part of the Shire and during a time as specified in a notice or broadcast (eg 38A and B) with the exception of the movement of vehicles and machinery on made gazetted roads, laneways and yards.

SUBURBAN AND RESIDENTIAL BLOCKS

- 1) Where the area of land is 0.202 hectares (half an acre) or less, all inflammable material on the land, must be reduced to a height of less than 7.5 centimetres (three inches).
- 2) Where the area of land exceeds 0.202 hectares (half an acre) in area, firebreaks at least 3 metres (9.84 feet) wide formed by either ploughing, cultivating, scarifying, burning or otherwise clearing must be provided immediately inside all external boundaries of the land and inflammable material on the remainder of the land must be reduced to a height of less than 7.5 centimetres (three inches).
- 3) Buildings or haystacks within the firebreak described in (2) must have the ground surface cleared to a distance of 6 metres (twenty feet) from and encircling the building/s or haystack/s of all flammable material.

RURAL LAND IN & OUTSIDE OF TOWN BOUNDARY

Firebreaks at least 6.0 metres wide formed by either ploughing, cultivating, scarifying, burning or otherwise clearing must completely encircle all buildings and haystacks.

Fuel tanks, whether containing fuel or not, must have the ground surface cleared to a distance of 6.0 metres from and encircling the tank/s of all inflammable material.

FIRE FIGHTING EQUIPMENT

Where the land owners total land holding is five (5) hectares or greater a readily mobile operational fire fighting unit onsite containing a minimum of 600 litres of water on standby and available for inspection.

All firebreaks as designated above must be prepared on or before 1 NOVEMBER or within 14 days of becoming the owner or occupier after that date and be maintained clear of flammable material up to and including 30 April.

PLANTATIONS

The Shire of Wagin has adopted the Guidelines for Plantation Fire Protection as its requirements for plantations. Copies of these are available at the Shire.

The following minimum firebreak standards apply for plantations;

- **Boundaries** – Firebreaks constructed 15 metres wide on the boundaries of plantations or another position as agreed between Council and plantation owner.
- **Compartment Break** – Internal firebreaks between compartments up to 30 hectares must be a minimum of 6 metres wide and for compartments over 30 hectares a minimum of 10 metres wide. In all cases a 5 metre running surface must be maintained to allow access by firefighting appliances.
- **Public Roads** – Firebreaks adjoining public roads must be constructed to a width of 15 metres.
- All fire breaks must be maintained in a trafficable condition and trees on both sides of breaks progressively pruned to a minimum height of four (4) metres to allow unrestricted access of maintenance and fire fighting equipment and so as to maintain an effective width of firebreak.
- Where powerlines pass through the plantation areas firebreaks as per Western Power specification must be provided.

For plantations up to 50 hectares in size the standard Shire requirements for equipment apply otherwise the minimum equipment standards are;

Plantation Area (ha)	2.4 M/Duty	3.4 H/Duty
50-1000 ha	1	-
More than 1000 ha	-	1

DEFINITIONS

- Fast attack relate to a 1 tonne 4x4 vehicle carrying minimum of 450L of water.
- 2.4 Medium Duty relates to a 4x4 truck carrying 2000L of water.
- 3.4 Heavy Duty relates to a 4x4 truck carrying 3000L of water.

RECOMMENDED HAZARD REDUCTION PROGRAMME

NUISANCE SMOKE

If planning to burn, please consider your neighbours, other properties that may be affected and the condition and type of materials to be burnt. It is important to ensure that smoke is not toxic and does not disrupt traffic on roads.

BURNING OF BUSH AND GRASS ON ANY LAND

Burning of bush and grass is totally prohibited between 1 November and 14 March inclusive (Prohibited Burning Period). Permits are required between 1 October inclusive and 31 October inclusive and between 15 March and 30 April inclusive (Restricted Burning Periods).

PERMITS TO BURN

Under the Bush Fires Act 1954, it is an offence to light fires during the Prohibited and Restricted Burning Periods, except in certain circumstances.

GARDEN REFUSE AND HINTS

During the Restricted Burning Periods a permit must be obtained to carry out any burning of garden refuse. All conditions contained in the burning permit must be adhered to. **NO BURNING IS ALLOWED DURING THE PROHIBITED BURNING PERIOD.**

Burning is prohibited on Moderate, High, Extreme or Catastrophic fire danger days.

Autumn to Winter (May-August)

- Tree pruning – remove lower branches, check that power lines are clear. Use a professional contractor.
- Reduce fuel levels around the house, clear long grass, leaves, twigs and flammable shrubs.
- Ensure petrol and other flammables are safely stored away from the main dwelling.
- Accommodation providers must make sure all guests are aware of emergency plan, including evacuation routes.

Spring (September – November)

- Move wood piles and stack timber away from the main dwelling.
- Keep grass short.
- Install firebreaks in accordance with these Fire Management Requirements.

Summer (November – May)

- Water lawns, trees and shrubs near buildings to keep green.
- Recheck fire-fighting equipment, screens, water supplies and that gutters remain clear.

Long Term precautions

- Make sure that buildings are safe – fit wire screens and shutters, fill gaps into roof/wall spaces, fit fire screens to evaporative air conditioners and have them operable to provide a water supply.
- Give consideration to installing external building sprinkler systems and backup power for emergencies.
- Ensure that access to emergency water supplies has the correct fittings, is unobstructed and trafficable.
- Get basic training in fire-fighting by contacting the Shire of Wagin.

MINIMUM STANDARDS FOR BURNING

- Don't light a fire on a hot or windy day.
- Don't try to burn more than you can control.
- Inform your neighbours.
- Make sure smoke and sparks will not affect neighbours' washing or open windows.
- Cut or rake long grass around trees, buildings and fences before burning.
- Burn against wind.
- On a sloping block, burn from the top down.
- Have a hose or spray pack to dampen down fire intensity.
- Extinguish fire by midnight.
- Have the ability to contain your fire.

PRIVATE PROPERTY

Wood and solid fuel barbecues are only to be used where they are enclosed and all flammable material in a 5 metre radius is cleared. Fire cannot be lit on days of HIGH, EXTREME or CATASTROPHIC fire danger days.

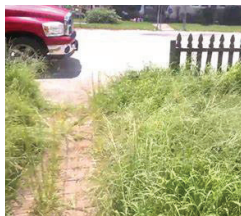
BBQ's and INCINERATORS

Gas and electric barbecues are permitted at any time. Solid fuel barbeques and incinerators are **prohibited on days of HIGH, EXTREME or CATASTROPHIC fire danger.**

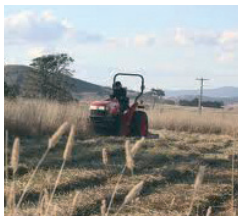
CAMPFIRES

The Shire of Wagin hereby prohibits the lighting of fires in the open air in its district for the purpose of camping or cooking during Prohibited Burning Periods, unless the fire is in an area which - is set aside for that purpose by the State Authority or Local Government responsible for the care, control or management of the land; and bears the State Authority's or Local Governments sign denoting that purpose and all combustible material is cleared from within 5 metres radius of the fire.

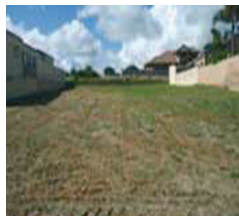
**COMPLIANCE WITH THIS NOTICE IS REQUIRED
BY 1 NOVEMBER EACH YEAR AND IS TO BE
MAINTAINED UNTIL 30 APRIL EACH YEAR OR
AS OTHERWISE GAZETTED**



Non – Compliant



Complying



Compliant

RECOMMENDED HAZARD REDUCTION PROGRAMME

PENALTIES APPLY

- Failure to comply with Firebreak Notice - \$250.00
- Offence relating to lighting fire in open air - \$250.00
- Setting fire to bush during prohibited burning periods - \$250.00
- Failure of occupier to extinguish a bushfire - \$250.00
- Refusal to state name and address or stating false name and address - \$100.00
- Failure to produce permit to burn - \$100.00

These can result in Court action with fines ranging from \$500.00 to \$10,000.00 or imprisonment.

Take notice, that pursuant to section 33(4) of the Bush Fires Act, where the owner or occupier of land who has received this Notice fails or neglects to comply with the requisitions of the Notice within the time specified, the Shire of Wagin may, by its officers, vehicles and machinery as the officers deem fit, enter upon the land and carry out the requisitions of the Notice which have not been complied with and pursuant to section 33(5) of the Bush Fires Act, the amount of costs and expenses incurred may be recovered from you as the owner or occupier of the land. The penalty for failing to comply with this notice is a fine not exceeding \$5000 and the person in default is also liable, whether prosecuted or not, to pay the costs of performing the work directed in this Notice if it is not carried out by the owner or occupier by the date required by this Notice. If the requirements of this Notice are carried out by burning, such burning must be in accordance with the relevant provisions of the Bush Fires Act.

CONTRACTORS

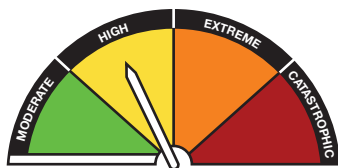
The contractors mentioned have lodged their names with this Council for public reference if required. They are not employed as sub-contractors, nor is Council responsible for any works carried out if used in a private capacity.

FIRE BREAKS AND SLASHING

Ron Cumper: 0447 423 944
Larry Stanbridge: 0437 025 415
Jackson Mason: 0499 411 279
Andrew Hopkins: 0408 831 242
Darrin Langford: 0428 825 778

FIRE DANGER RATING

The Australian Fire Danger Ratings (AFDRS) levels are:



MODERATE

Plan and prepare

HIGH

Be ready to act

EXTREME

Take action now to protect life and property

CATASTROPHIC

For your survival, leave bushfire risk areas

Name/Colour	Fire Behaviour Index Range	Suppression difficulty
MODERATE (Green)	12-23	Most bushfires in this category. Fires typically suppressed with direct, parallel or indirect attack.
HIGH (Yellow)	24-49	Initial attack success critical to prevent large fire development. Defensive suppression strategies.
EXTREME (Orange)	50-99	Defensive suppression strategies. High levels of threat to life/property. Safety of firefighters and community paramount.
CATASTROPHIC (Red)	100+	Unsafe for firefighters and community. Without initial attack success, likelihood of very large fire development is very high. High probability of loss of life and property.

- The Fire Danger Rating gives you advice about the level of bushfire threat on any given day. It is based on the forecast weather conditions.
- The higher the rating, the more likely people may die or be injured during a fire.
- Only well prepared, well constructed and actively defended homes may offer any safety up to the category of Extreme.
- Consider in your bushfire survival plan if your actions will change at different Fire Danger Rating categories.
- The Fire Danger Rating is published by the Bureau of Meteorology at www.bom.gov.au and through the media.

TOTAL FIRE BAN

When a TFB is declared the lighting of any fire in the open air is prohibited. The ban includes all open fires for the purpose of cooking and camping.

A Total Fire Ban also prohibits other activities, for more information please see the DFES Website.

TOTAL FIRE BAN PENALTY

A fine of up to \$25,000 or imprisonment for 12 months or both.

FIRE DANGER RATING

THE HARVEST BAN HOTLINE NUMBER

PHONE: 0438 013 123

HARVEST AND VEHICLE MOVEMENT BANS

The Shire of Wagin may impose a Vehicle Movement and/or Harvest Ban due to dangerous fire weather conditions or if there are bush fires already burning. When imposed, any operation of machinery involved in harvesting crops, or other produce MUST come to a stop.

ANY BAN WILL BE COMMUNICATED VIA A COMBINATION OF ABC LOCAL RADIO, SMS AND THE BUSH FIRE BRIGADES RADIO NETWORK

Farmers and personnel from relevant industries may subscribe to the Shire of Wagin SMS Service for the communication of Harvest and Vehicle Movement Ban information. Some activities may continue during a Harvest and Vehicle Movement Ban at sites approved by and registered with the Shire. For more information, please contact the Shire of Wagin or your local FCO.

REGISTRATION FOR SMS NOTIFICATION OF HARVEST & MOVEMENT BANS

Provide your name, organisation and mobile number to the Shire of Wagin, 08 9861 1177.

Listen to ABC Radio on 558AM.

CHRISTMAS DAY

A Harvest ban and a ban on the movement of all vehicles and machines and the operation of internal combustion engines is imposed on Christmas Day each year.

All other activities or operations may only be undertaken during Total Vehicle and Machinery Movement Bans on the Operation of Internal Combustion Engines after approval has been granted by Council. Approval has to be sought on an individual basis. Approval may be subject to specified conditions. Note that approval may not be granted.

PERMITTED ACTIVITIES

1. Loading and offloading of grain, fertiliser and feed is only permitted on sites which are clear of all inflammable material except live standing trees to a radius of at least 50 metres with a laneway access. A mobile fire fighting unit must be in attendance at all times.
2. Water carting for stock and domestic purposes provided it is accompanied by a mobile fire fighting unit, or alternatively, the water carting vehicle acts as the mobile fire fighting unit and meets minimum specifications.
3. All necessary travel to and from and within piggeries, sheep or cattle feed lots, provided this is undertaken with a mobile fire fighting unit in attendance.
4. All necessary carting of livestock provided that such a vehicle is accompanied by a mobile fire fighting unit.
5. Activities which received specific exemptions from Council or the Chief Bush Fire Control Officer.

Regulation 38A – Harvesting, Swathing/Baling of Stubble and Track Chaining:

Conditions: It is hereby notified for public information that pursuant to the power granted under Regulation 38A of the above Act, a person must not operate a grain harvesting machine, or any machine used for swathing, baling or slashing of stubble and track chaining, on any land within the Shire of Wagin except in accordance with the following specified condition:

Specified condition: No person will operate grain harvesting machinery as stated above on any land unless one hand held water filled fire extinguisher (minimum capacity 7.5 litres) is filled in a readily accessible position on the machine and a mobile and operational firefighting unit, having a water capacity of at least **600 litres**, is in attendance during harvesting operations.

Penalties: An infringement of \$250.00. A penalty of up to \$5000.00.

The recommended minimum standards for fire unit requirements are based on property size as follows:

- (i) 50 to 2500ha - Medium Duty Unit. Light truck either 2WD or 4WD. 2500 litres of water.
- (ii) 2500 + ha - Heavy Duty Unit. 6 tonne capacity truck, preferably diesel. 4000 litres of water.
- (iii) All units are to be fully operational and ready to go at all times during the prohibited burning period.

BURNING INFORMATION

PERMITS TO BURN

Under the Bush Fires Act 1954, it is an offence to light fires during the Prohibited Burning Period.

During the Restricted Burning Period, permits to burn are required. These may be obtained from the Local Volunteer Fire Control Officer, for your area or the Shire of Wagin if the property is within the Fire & Rescue District.

RESTRICTED	PROHIBITED	RESTRICTED
PERMIT REQUIRED		PERMIT REQUIRED
1 October to 31 October	1 November to 14 February	15 February to 30 April

WHEN TO OBTAIN A PERMIT

1. For burning of bush and grass at any time between 1 October and 31 October inclusive and 15 March and 30 April inclusive.
2. For burning small heaps of garden refuse at any time between 1 October and 31 October inclusive and 15 March and 30 April inclusive.
3. For carrying out **protective burning** around dwellings and buildings pursuant to Section 23 of the Bush Fires Act until 15 November.
4. Sunday burning is discouraged.

These times may be varied by the Shire of Wagin depending on seasonal conditions. Changes will be publicised in local papers and on the Shire of Wagin website.

 ABC Emergency



MAJOR INCIDENTS

Messages to the community from the Incident Controller will be broadcast regularly on the ABC Radio. Tune to 558AM for updates.

WHEN THE FIRE WEATHER FORECAST IS MODERATE, HIGH, EXTREME OR CATASTROPHIC NO FIRES WILL BE LIT AND ALL PERMITS WILL BE SUSPENDED.

***Remember this Ratio = 1 metre of flame height requires 4 metres of distance to escape radiant heat**

**THE HARVEST BAN
HOTLINE NUMBER**

**BURNING
INFORMATION**

BUSH FIRE BRIGADE CONTACT DETAILS

Fire Control Officers

Chief Fire Control Officer	Xavier White	0438 611 126
Deputy Chief Fire Control Officer	Wade Brockway	0409 102 704
Shire of Wagin		9861 1177
CEO Shire of Wagin		0429 611 493

Base Radio Officer	Brigade	Roster System	Mobile
Lyn Lucas	Badgarning	Badgarning	0418 811 510
Cam Clifton	Badjarning	Badjarning	0448 612 033
Xavier White	Ballaying	Ballaying	0438 611 126
Glen Thompson	Ballaying	Ballaying	0428 846 669
Anthony Rowell	Cancanning	Cancanning	0437 480 312
Steven Angwin	Cancanning	Cancanning North	0428 616 053
Phil Ward	Lime Lake	Badgarning	0427 611 503
Wade Brockway	Lime Lake	Parkeyerring	0409 102 704
Ross Goldsmith	Piesseville	Piesseville	0427 611 529
Carol Goldsmith	Piesseville	Base Coordinator	0409 111 046
Chris Piesse	Piesseville	Piesseville West	0418 470 113
Bryn Becker	Wedgecarrup	Norring	0400 191 112
Ian McDougall	Wedgecarrup	Warup	0428 622 049
Shaun Robinson	Wedgecarrup	Wedgecarrup	0438 626 034

Wagin Base will operate on UHF emergency channel 5. If attending a fire, brigade members are asked to switch to this channel.

**A FIRE CONTROL OFFICER HAS THE
AUTHORITY UNDER THE BUSH FIRES ACT
1954 TO HALT ANY ACTIVITY OR OPERATION
THAT THEY DEEM AS HAZARDOUS OR
LIKELY TO START A FIRE.**

Application to Vary the Above Requirements

If it is considered to be impracticable for any reason whatsoever to clear firebreaks as required by this notice, you may apply to the Shire of Wagin no later than **23 September**, for permission to provide firebreaks in alternative positions on the land. If permission is not granted by the Shire you must comply with the requirements of this notice.

If the requirements of this notice are carried out by burning, such burning must be in accordance with the relevant provisions of the Bush Fires Act.

The Penalty for failing to comply with this notice is a fine not exceeding \$5000.00 and a person in default is also liable, whether prosecuted or not, to pay the costs of performing the work directed in this notice if it is not carried out by the owner and/or occupier by the date required by this notice.

FIRE PREPAREDNESS

- **Prepare. Act. Survive.** (Material available from the Shire of Wagin and DFES Website)
- **You are responsible for your own
FIRE PROTECTION**

CONSIDER BECOMING A BRIGADE MEMBER.

**PLEASE CONTACT THE SHIRE OR YOUR LOCAL
BRIGADE FOR FURTHER INFORMATION.**

BUSH FIRE BRIGADE CONTACT DETAILS

MAGNET



SHIRE OF WAGIN

PO Box 200

WAGIN WA 6315

Web: www.wagin.wa.gov.au

**For additional bush fire safety information,
please visit**

**Department of Fire and Emergency Services
website:**

www.dfes.wa.gov.au

Volunteers make up the Bush Fire Brigades in the Shire of Wagin. Help to provide a safer community by becoming an active member of your brigade. For more information, call your local brigade or the Shire of Wagin. Emergency Services in the Shire are also seeking volunteers for a range of support roles and we welcome your inquiry.