



# ***WAGIN WOODANILLING LANDCARE ZONE***

***JULY 2023 NEWS***

---

**CARBON FARMING WORKSHOP - WOODANILLING**



### **27th June 1pm - 4pm Woodanilling Sports Pavillion**

Our Carbon Farming event in Woodanilling had a few locals turn out to get more information on how to get started in this sometimes confusing area.

The event covered a huge range of information including what carbon credits are, how you estimate your carbon sequestration, different methods of carbon farming, offsetting, insetting, clarifying the jargon and helping understand the nitty gritty of how it all works.

There is the increasing demand for carbon neutral produce, and at the very least if you 'inset' your own farm emissions through carbon farming to become neutral, you have some opportunities for future marketing, whether you continue on to actually 'farm' carbon for financial values or not. Carbon farming is more than just planting trees, it covers soil carbon as well which can include pastures and new farming methods to increase soil carbon. The main point of all the activities though is that it **MUST** be something new to your operations.

Presented by DPIRDS Carbon Futures team, with a variety of speakers including pre-recorded presentations, the guys did a great job of covering a huge amount of information. With so much to take in, the team has provided us with all of the presentations from the event, which we are happy to share with you if you would like

access to more information for your own business.

There is some good explanations of a complicated process, so definitely recommend getting a copy of the presentations for you to read through to decide if you wish to get in on managing carbon into the future. Get in touch with Gen for a copy of the presentations.

---

# Shelter and Lamb Survival

Do you, or have you ever thought about lambing into crops or shrubs?

Murdoch, CSIRO and UWA are investigating the impact of shade and shelter on sheep reproduction and welfare. We are currently looking for producers who would be happy for us to **compare lamb survival** on a pasture paddock versus a crop paddock and/or versus a shrub paddock.



Best pasture lambing paddock



Crop lambing paddock



Shrub lambing paddock

## What this would involve:

- At minimum, we need 50 twin-bearing adult ewes per paddock
- At lambing and marking we will condition score the ewes, collect nutritive value and measure feed-on-offer
- At marking we will wet and dry the ewes and count the lambs per paddock
- We will measure microclimates of each paddock throughout lambing

For expressions of interest or general advice on lambing into crops or shrubs, please contact:

|  |   |
|--|---|
| <p>Georgia Welsh<br/>0409 833 036<br/>georgia.welsh@murdoch.edu.au</p> | <p>Serina Hancock<br/>0403 570 823<br/>s.hancock@murdoch.edu.au</p> |
|--|---|



This project is proudly funded by MLA. For more information on the Shade and Shelter Project, please scan the QR code.

Georgia from Murdoch Uni has reached out to us to see if we may be able to help them secure more lamb producers for their research into comparing lamb survival and welfare in differing environments.

The project is being run over several years, they have completed the first round but will be seeking farmers for a further 2 lambing seasons.

If you would like to get involved and link into research happening in this space, get in touch with Georgia Welsh 0409 833 036

---

## **BIRDS ON FARMS - SAT 16TH SEPT EVENT**

Would you like to know more about the health of your farm ecosystem? Birds are a great indicator of what is going on around us due to their feeding and habitat requirements.

The types of birds detected on a farm can be an indicator of the property's environmental health and the sustainability of agricultural practices.

Declining woodland bird populations are in a healthier state within agricultural districts that have well-managed remnant habitats and areas of revegetation.

More than 70% of the land area in South Western Australia is in private ownership – with much of this in regional areas. As such, rural properties have an essential role to play in bird conservation.

Birdlife WA has approached us to partner with them to find wheatbelt farms where we can undertake some regular surveys of the bird populations to provide real data

on what birds are doing in our area.

We would love to find some farms that have some remnant bush, or areas of pasture that include trees of around 2 hectares minimum that we can survey regularly throughout the year. We hope that there may be opportunities for vegetation protection and rehabilitation of land as a result of these activities.

We would also love to find some bird enthusiasts from our local population that would like to learn more about bird watching, increase their skills and knowledge and get involved in these surveys as part of nationally recognised citizen science.

We will be hosting an event on Sat 16th Sept open to farm owners and bird enthusiasts both who would like to be involved in the program. This event will cover the details behind birds on farms and what the program is all about, and will include a field component where we head out to conduct a survey and learn the nitty gritty of how to survey correctly. We will be putting out official promotional material shortly, but you can register your interest with Gen at the office in the mean time if you want to get in early.

There are also a number of webinars starting this week related to the program that we can recommend interested people sign up for. This will be a great head start into the program if you can



ONLINE WEBINAR 

# BIRDS ON FARMS WESTERN AUSTRALIA

*Birds on Farms is hosting three Webinars in July. Get your Birdwatching skills brushed up learn all the Birddata tricks and, how to select survey sites*

  
**JUL**  
**13**

## Birds on Farms a National Program

- A bit of history
- Methods and next steps
- First results over east with a special guest: **Caroline Wilson**, from the BOF National team in Victoria

  
**JUL**  
**20**

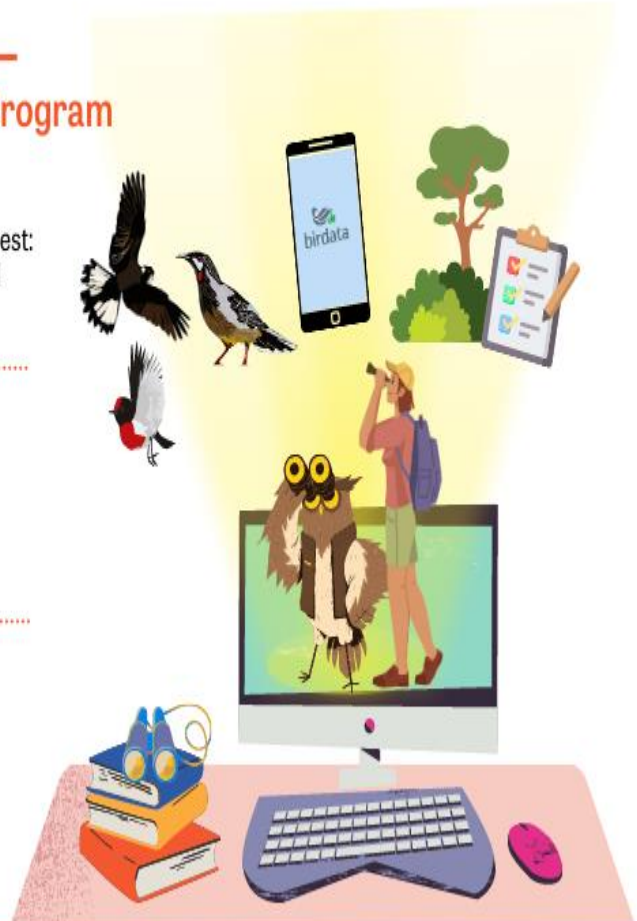
## All things Birdwatching

- Getting the most out of Birddata
- 2min 2ha tricks
- BirdID Wheatbelt Edition

  
**JUL**  
**27**

## Habitat and Survey Sites

- What does habitat tell us?
- How to select Survey Sites
- How to do a Habitat Assessment



natural resource  
management program



This project is supported by funding  
from the Western Australian  
Government's State NRM Program

## TIPS FOR MANAGING RODENTS WITHOUT SGARs (SECOND-GENERATION ANTICOAGULANT RODENTICIDES)

We occasionally get queries around safe methods for getting rid of mice and rats at home that won't affect the birds that may eat the rodents or other wildlife. Despite the labelling that some types of baits are 'safe', this is only the case when the baits are delivered correctly with a bait station and not in the pelleted form. A variety of natives such as possums and red-tailed phascogales may end up eating these instead of your targeted quarry.

When dealing with rodent pests, there are several options that can be taken without resorting to Second-Generation anticoagulant rodenticides.

The first steps you take can avoid poisons entirely.

**Keep rodents out.** Use physical barriers to prevent rodents from getting into buildings. Small wire mesh over any potential rodent pathways is a good option. This is a long-term solution and should be the first step in home rodent control.

**Remove food and water.** Having food sources available attracts rodents. In the garden, pick up any fallen fruit and veg, make sure compost isn't accessible and keep pet foods in chew-proof containers. In the house, chew proof containers are also a good option. Remove shelters. Debris, such as thick leaf litter, and clutter are safe havens for rodent pests. Minimise potential rodent shelters around your home.

**Use traps** There are many different traps available depending on your circumstances. Use traps that do not pose a risk to non-target species. If you are



trapping outside, or in an area that other species can access, consider live traps so any non-target species can be safely released. Snap traps are a good option inside the home.

**Rodenticides** If using rodenticides, look out for the active ingredients warfarin, coumatetralyl and diphacinone. These are what's known as First-Generation Anticoagulant Rodenticides, and pose less risk to non-target species. It is still important to use bait stations to deliver bait, these make it harder for any non-target species to access the poison.



## Buy Traps and Lures

- Ensystem Nara range of traps and non-toxic lures:  
<https://ensystem.com.au/nara.html>
- Goodnature traps, for use away from other animals:  
<https://goodnature.com.au/>
- Live traps, like those available at: <https://www.pestrol.com.au/>
- Rodent proofing materials like wire mesh: <https://www.pestrol.com.au/>

## Baits and FGARs

Ensure active poison ingredients are warfarin, coumatetralyl or diphacinone.

Purchase baits that come in block or paste form, and deliver them in tamper-proof bait stations.

Avoid bait pellets as these can be easily eaten by other animals.

- Ratsak Naturals (a human and pet safe bait option)
- Tamper proof bait stations are available at all major suppliers
- JT Eaton Apple Bait Block Rodenticide
- Bayer Racumin Rat and Mouse Paste
- Ruth Consolidated Industries (RCI) Ratblitz bait
- Parafarm Ratex Mouse and Rat Bait
- Yates RATSAC Double Strength Bait Station
- PCT Holdings Surefire Couma All Weather Blocks Rodenticide
- Motomco Tomcat All-Weather Rodent Block

## Avoid SGARs

Packaging for SGARs can be unclear, but as a safe bet avoid products with the

ingredients brodifacoum, bromadiolone, difethialone, difenacoum or flocoumafen.

The following products all contain SGARs and should be avoided.

- Bainbridge Bait Blocks Rodenticide
- De Sangosse Australia Bromakil Grain Bait for Rats and Mice
- De Sangosse Australia Bromakil Super Rat Drink
- Bell Laboratories Inc. Contrac Blox
- Bell Laboratories Inc. Contrac Soft Bait
- Bell Laboratories Inc. Contrac All Weather Blox Rodenticide
- Liphatech Generation Blue Rodenticide Soft Bait
- Reckitt Mortein Kills Rats & Mice and the Fleas They Carry Dual Action Baits
- Reckitt Mortein Rat Kill Professional Household Protection
- Animal Control Technologies Mouseoff Bromadiolone Rodent Bait
- Zapi S.P.A Muskil Soft Bait with Two Actives for Faster Kill of Rats & Mice
- Amgrow Patrol Rodex Rat Blocks
- PCT Holdings All Weather PCT First Formula Blocks Rodenticide
- Triox Pestmaster Rat and Mouse Killer
- Yates RATSAK Fast Action Bait Station Kills Rats & Mice
- Yates RATSAK Fast Action Disposable Mouse Bait Station with Wax Block
- Yates RATSAK Rapid Strike Dual Active Wax Blocks
- Freezone Public Health Ratshot Final Kill Paste Rodenticide
- Freezone Public Health Ratshot One Shot Rodenticide Pellets
- Freezone Public Health Ratshot Rapid Kill Rodenticide Blocks
- Pelgar International Roban Rodenticide Blocks
- Zapi S.P.A Rodenthor Gel Rodenticide
- Bayer Rodilon Pro Rodenticide
- BASF Australia Storm Secure Wax Block
- PCT Holdings Surefire All Weather Blocks Rodenticide
- PCT Holdings Surefire Broma, Couma or Difenate Blocks Rodenticide

- Yates Talon Rat & Mouse Killer All Weather Wax Blocks
  - Yates Talon Rat & Mouse Killer Pellets
  - Yates Talon XT Pro Rodenticide Wax Blocks
  - Pelgar International (Aus) The Big Cheese Home Choice All Weather Block Bait
  - Pelgar International (Aus) The Big Cheese Home Choice Rat & Mouse Kill Throw Packs
  - Pelgar International (Aus) The Big Cheese Ultra Power Fast Action Bait Blocks
  - Bell Laboratories Inc. Tomcat All-Weather Blox
  - Bell Laboratories Inc. II Tomcat II Blox Rodenticide
- 

## **FUTURE DROUGHT FUND UPDATE**



**Science to Practice Forum**

Video recordings from the Future Drought Fund's 2023 Science to Practice Forum, held 6-8 June, are now available online.

The forum is a showcase of the innovative tools and practices Australian farmers, communities, researchers and decision makers are using to respond to a changing climate and build drought resilience. It's a great way to see the work of the Future Drought Fund in action across the country.

This year's 3-day forum was hosted by Pip Courtney from ABC TV's Landline and you can watch all the sessions from the program, including feature speakers, presentations, panel talks and video content, at any time by clicking the link button below.

Day 1 – Research and development

First Nations farming advocate and researcher Joshua Gilbert, seeds and soil health: innovating at scale, global connections for drought resilience, the commercialisation of drought resilience products and services.

Day 2 – Farmers, Producers and Agricultural Advisors

Australian Farmer of the Year Michael Taylor, rehydrating landscapes, planning for profitability and productivity, tools for change, lived experiences and lessons learned.

Day 3 – Community and policy

Queensland's first regional Chief Entrepreneur Julia Spicer, relationships for resilience, engaging First Nations farmers, overcoming barriers to change, mental health heroes.

**Future Drought Forum Videos**



**Australian Government**  
**Department of Agriculture,**  
**Fisheries and Forestry**



**Future**  
**Drought**  
**Fund**

---

**EQUIPMENT AVAILABLE TO HIRE**





## Hoggone Bait Box

Using first a placebo bait and then a sodium nitrate mix, this box is designed that pigs can open it to access the bait and prevent any non-target poisoning.



## Pottiputki's (Manual Tree Planters)

A tree planter by a strange name - designed by Mr Pottiputki of Sweden, these tree planter are available to hire any time throughout the year.

\$5 per planter per week



## Chatfield Tree Planter

This machine can scalp, rip, mound and plant all in one pass. Manual adjustment for setting plates and blades, hydraulics for setting ripper and operations. Suit small or large tractor.

Requires high axle vehicle for towing to site.

\$110 per day (inc GST)



## Kylera Tree Planter

This machine can scalp, rip, mound and plant all in one pass. Manual adjustment for setting plates and blades, hydraulics for setting ripper and operations. Small tractor suitable

\$110 per day (inc GST)



## Ripper Moulder

Rips and mounds in one pass. 3 point linkage system required. Not able to tow behind vehicle to pick up, requires truck, flat bed or trailer.

\$55 per day (inc GST)



## Cat Trap

Simple trigger activation. Too small to suit foxes, suitable for wildlife such as possums.

\$20 per week plus \$50 refunded bond



## Fox Trap

Large trap, could also be used for feral cats and smaller dogs.

\$20 per week plus \$50 refunded bond



## Rabbit Trap

Live capture traps designed for warren entrance holes. Some pre-training of rabbits required for effective use.

\$20 per week plus \$50 refunded bond



### **Wildlife Monitoring Cameras**

Sensor activated, good night time visibility. Video or photo, various settings available for different use requirements.

\$25 per week plus \$50 refunded bond



### **Phoebe the Red-tailed Phascogale**

Phoebe is available to hire out to events or for educational purposes. Phoebe suit comes equipped with staff member.

Suit not available on its own.

\$55 per hour (inc GST)

---

## **THANK YOU!**

WWLZ works closely with both Shires in the Zone and is supported by these organisations in many ways.

We would like to recognise this invaluable support that allows us to continue to provide a service to the communities of both Shires.



---

## THANKS TO OUR FUNDING AGENCIES



- Pollination for Production



- Feed 365 Project



- Helping our Wagin-Woody community to understand and protect our species
- Protecting threatened species from feral pig impacts in the wheatbelt



Federal funding through SWCC, State NRM

---

# ***WAGIN WOODANILLING LANDCARE ZONE***

62 Tudhoe Street / PO Box 311  
Wagin WA 6315

Ph: 9861 2222  
Mobile: 0428 231 506

Please add [wwlandcare@westnet.com.au](mailto:wwlandcare@westnet.com.au) to your address book or safe sender list so our emails get to your inbox. Genevieve Harvey.  
[Report Abuse](#) | [Unsubscribe](#) | [Edit Profile](#)

SHARE THIS EMAIL



SIGN UP FOR YOUR ACCOUNT

*Campayn*